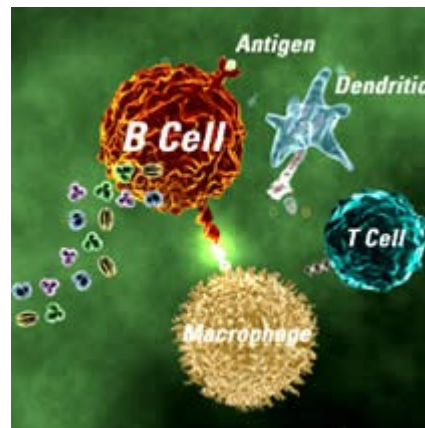




Mini-Workshop on Physicist Investigations in Immunology

Sapienza Università di Roma – Sala Persico
organized by Elena Agliari & Adriano Barra



14:30 Dott. Lorenzo Asti

“Application of a stochastic modeling to assess the evolution of tuberculous and non-tuberculous mycobacterial infection in patients treated with tumor necrosis factor inhibitors”

14:50 Dott. Daniele Tantari

“Anergy in self-directed B lymphocytes from a statistical mechanics perspective”

15:10 Dott. Andrea Galluzzi

“Parallel processing in immune networks”

15:30 Prof. Leighton Barnden

“MRI evidence that Chronic Fatigue Syndrome (CFS) symptoms derive from impaired connectivity through the midbrain”

16:30 Round table:

Immunology and theoretical physics. Where do we stand?

For information please write at agliari@fis.unipr.it or adriano.barra@roma1.infn.it